

BONNIVIE

MEDICAL AID SCHEME

For your well-being.



Managed by Vivat Health Solutions

It is health that is real wealth and
not pieces of gold or silver

Mahatma Gandhi



“

**HEALTHCARE: A
RIGHT FOR EVERY
ZIMBABWEAN**

”

**- BON VIE MEDICAL AID SCHEME
FOR YOUR WELL-BEING**



COMPETITIVE BENEFITS

- Acceptability of card – the Bon Vie membership card is “As good as cash”
- Wellness and Prevention Cover
- Swift customer relationship Manager
- Strong adjudication and service provider engagement
- Highly motivated and engaged staff
- Strong adherence to Corporate Governance
- Funeral Cash Payout



FACTS ABOUT HEATHCARE COVERAGE IN ZIMBABWE

Out of the 13,5 million lives	About 1,5 million is covered by the existing medical aid industry
31 Medical Aid funds	Covering 1.5 Million lives, those covered are formally employed in both the Public and Private Sector
Medical Aid Market	Shrunk with > 90 % of the formal sector having been transformed into SME
2015 Claims paid by Medical Aids	\$437m almost equal to budget allocation

WHO IS COVERING THE 12, 5 MILLION LIVES? – Its time to change the game.

UNIVERSAL
MEANS
EVERYBODY

HEALTH CARE
IS A WELL-NESS
BABY
HUMAN RIGHT!

SUPPORT HEALTH
CARE FOR THE HOMELESS
IN THEIR FIGHT FOR
TOTAL HEALTH CARE!
CLARENCE

UNITED WE STAND!

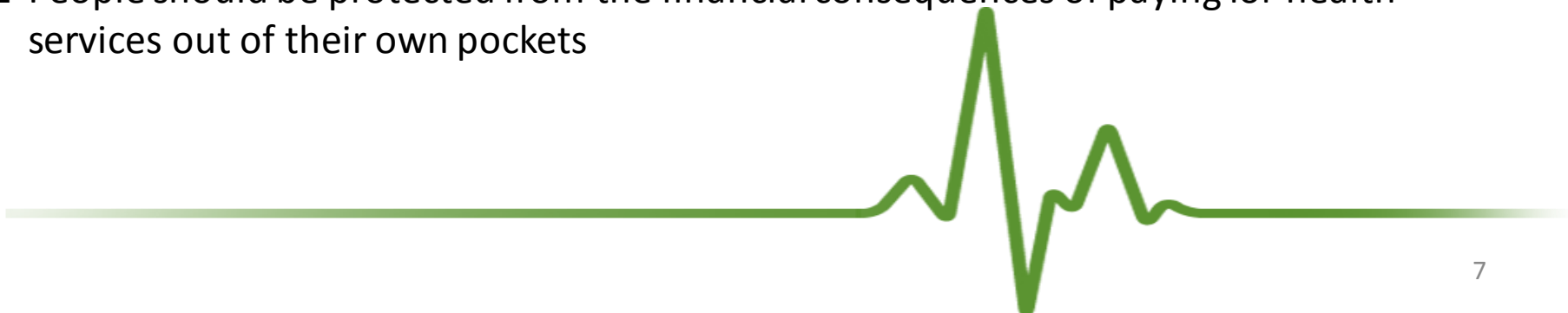
Miss
Lynn
Pocahontas



HUMAN RIGHT TO HEALTH CARE

The human right to health care means that hospitals, clinics, medicines, and doctors' services must be:

- Accessible, available, acceptable, and of good quality for everyone, on an equitable basis, where and when needed.
- Enables everyone to access the services that address the most important causes of disease and death.
- All individuals and communities must receive the health services they need without suffering financial hardship
- People should be protected from the financial consequences of paying for health services out of their own pockets



BON VIE PRODUCTS

APPROACH

1. We offer a wide range of product choices, from \$5.00 to \$115.00.
2. Innovative approach to health care products
 - (i) Classic Packages
 - (ii) Self Funded Packages
 - (iii) Partially Self Funded Packages
 - (iv) Medaccess Package
 - (v) Student Package
 - (vi) Hospital Only Package

SERVICES

Our services to clients include tailored medical aid solutions to suit every clients individual needs and budget.

Our extensive footprint across Zimbabwe allows us to service all sectors of the market on an individual basis

BON VIE MedAccess PLAN – Answer to the Uncovered 12,5m Lives

MEDACCESS

- A micro-medical aid scheme at very affordable rates providing access to health care at public and selected private medical centres
- Subscription payments can be staggered over a thirty day period and must be up-to-date before the cut off date for that month.
- Once subscriptions are up-to-date you will have access to medical treatment in the following month.
- Registration process – simple
- Payment Methods

**MEDICAL COVER FROM AS LITTLE
AS \$5.00**

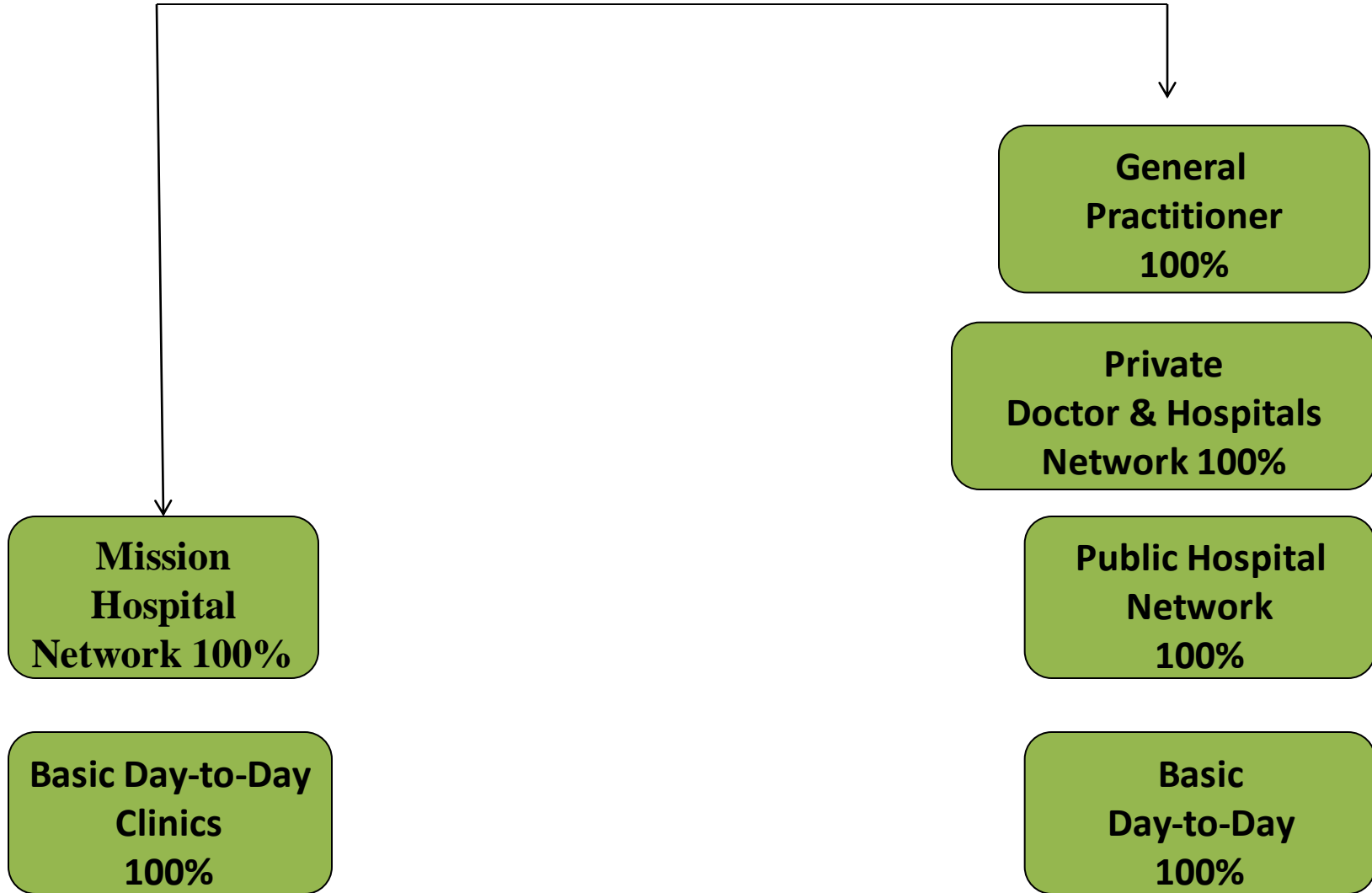
MEDACCESS BENEFITS AND BENEFITS LIMITS

- Annual Global Limit \$2.000.00
- Monthly Cover \$250.00
- GP, Specialist Consultations (Dental, Optical, Maternity), Hospitalisation, Surgeries, Laboratory tests, X-rays done at municipal clinics, government and mission hospitals and Selected Private facilities
- Ambulance Evacuation by road to a nearby selected health centre



MedAccess Benefit Options

Networks



HEALTH CARE



HEALTH COVERAGE



CONTACT US: LOCATION

LOCATION

HARARE

No 8 Mt Pleasant Drive, Mt Pleasant,
Tel: **308213/40/50/74/79**

BULAWAYO

5th Floor East Wing Zimdef Building, 102
Fort Street, **Tel:**
(09) 77066/77092

LOCATION

GWERU

74 8th Street,
(054) 220401

Tel:

MASVINGO

2nd Floor ZIMRE Building
Cnr Hughs/S. Mazorodze
Tel (039) 264100/264093

CHINHOYI

253 Commercial Street **Tel: (067) 28922/4**

For Queries Contact:
claims@bonvie.co.zw



THANK YOU
/TATENDA/SIYABONGA